



Interlockkit K-7110

Installation Guide

This manual provides instructions for safe installation of the InterLock Kit onto Crouse-Hinds / Murray panels. The InterLock Kit will only allow one of these breakers to be in the "ON" position meeting the requirements of Article 702 of the National Electric Code ANSI/NFPA 70. The installation of the breaker retaining strap meets Article 408.36 (NEC 2008).

Contents Provided

- **Front Plate**
- **Back Plate**
- **Binder Post**
- **Binder Screws**
- **Drill Bit**
- **Loctite Pipette**
- **Main Indicator Label**
- **Danger Label**
- **Generator Indicator Label**
- **Operation Label**
- **Ziptie**

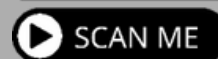


Wyle
Tested



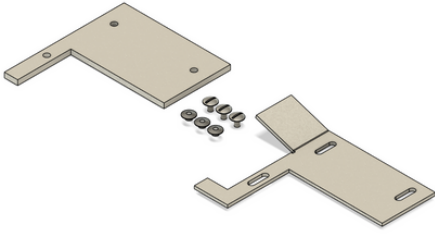
UL Listed

Installation Video

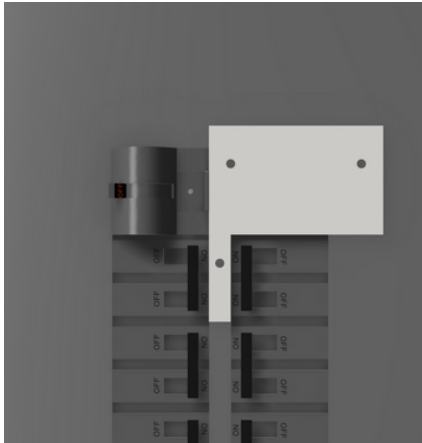


This kit must be installed and serviced only by qualified electrical personnel. Turn off all power supplying the equipment where this kit will be installed before working on or inside. Always use a properly rated voltage-sensing device to confirm that all power is off. Replace all devices, doors, and covers after installing this kit before turning on the power to the equipment. Always wear safety eyewear while drilling or working around electrical equipment. Items that are undamaged and include the original parts are eligible for return. Returns within 30 days are not subject to a 10% restocking fee.

- 1 Start by disconnecting the power to the panel.
- 2 Separate the front and back plate by unscrewing the posts and screws.



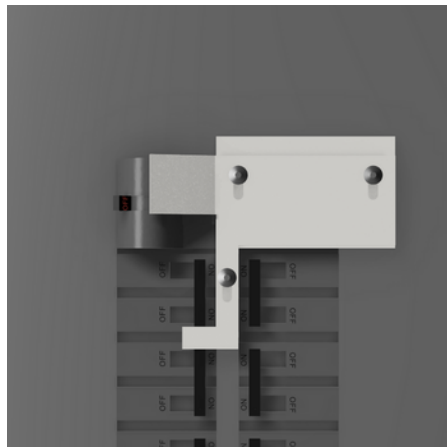
- 3 Temporarily attach the back plate kit using sticky tape to hold it in place and ensure a proper fit. Once in position mark the holes. Hold off on drilling holes until step 7.



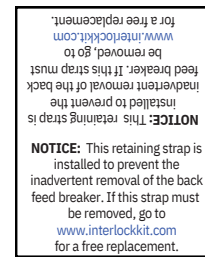
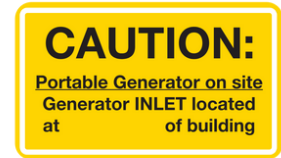
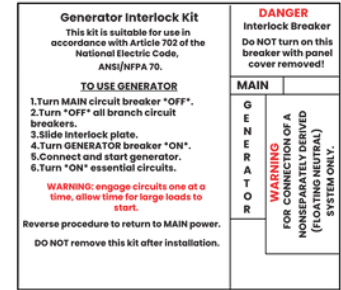
- 4 Remove the panel cover.
- 5 Remove breakers 5 and 6. Loop the breaker retaining strap around breakers 1,2,3,4. Align the head of the retaining strap at the bottom right of the number 4 breaker and tighten the strap.



- 6 Reinstall breakers in spaces 5 & 6 once the breaker retainer is installed
- 7 Drill through the holes in both the back plate and the panel cover. On the back side of the panel cover, file or scrape each hole to ensure proper grounding for the kit. The binding screw must make direct metal-to-metal contact with the back of the panel cover.
- 8 Insert the binder screws through the holes in the back panel and into the slots of the front plate. Reach around and use a binder post to secure the kit together, but be careful not to tighten it fully.



- 9 Set the **MAIN** and **GENERATOR** breakers in the **OFF** positions and reattach the panel cover.
- 10 Test the kit to ensure that **BOTH** breakers cannot be **ON** at the same time.
- 11 After testing - apply one drop of Loctite as demonstrated to the top of the binder posts to secure the kits position.
- 12 Place the labels in the correct positions, ensuring they are visible when the panel door is open.



- 13 Turn power back on.

Installation Video



Disclaimer: The installation video provided is a general guide using a specific interlock kit model. Your kit may differ in size, shape, or configuration based on your panel type. Always refer to the included written instructions for details specific to your kit, and consult a licensed electrician if needed.